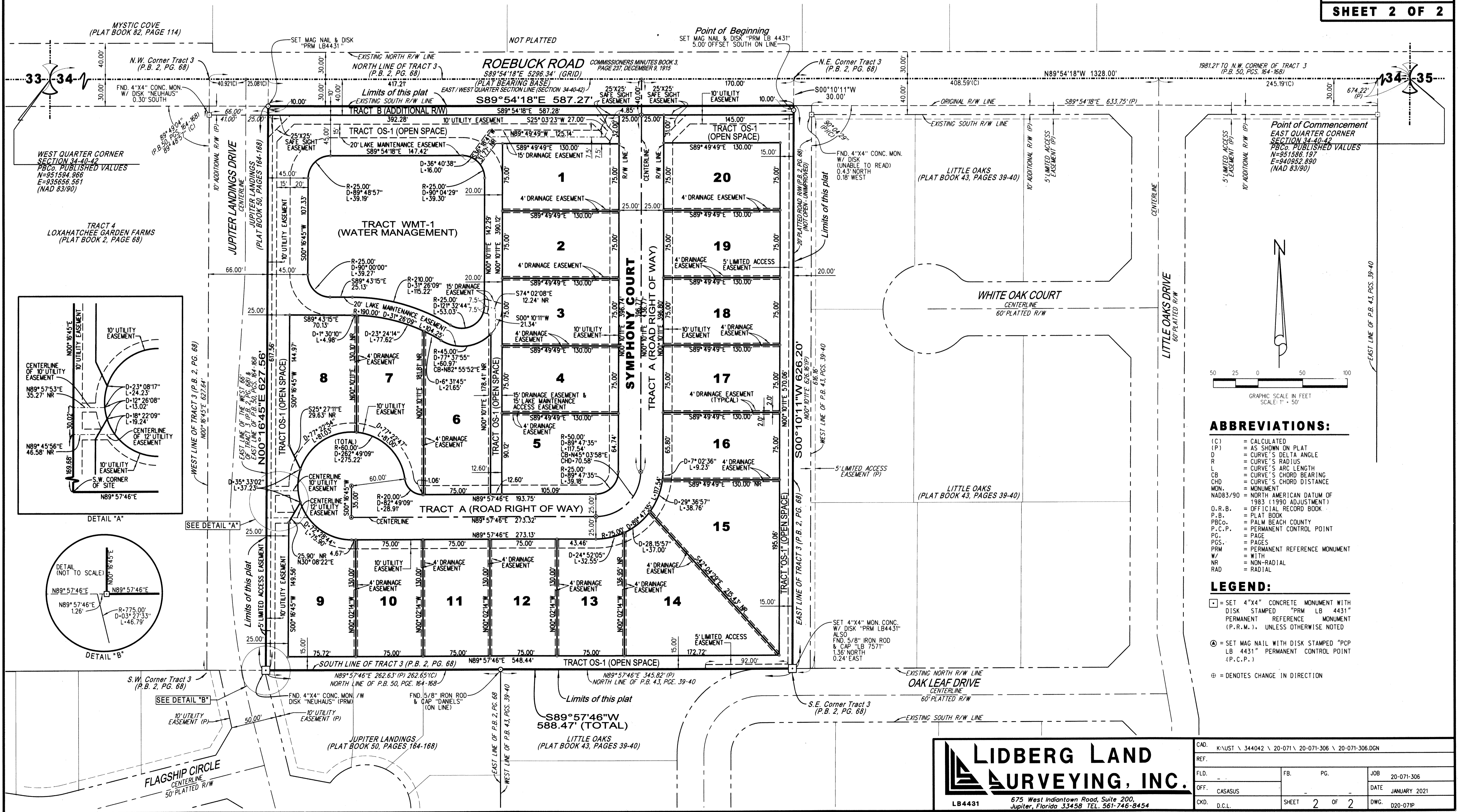


# SYMPHONY AT JUPITER

BEING A REPLAT OF A PORTION OF TRACT 3, AS SHOWN ON THE PLAT OF LOXAHATCHEE GARDEN FARMS, RECORDED IN PLAT BOOK 2, PAGE 68, PUBLIC RECORDS OF PALM BEACH COUNTY, FLORIDA LYING IN SECTION 34, TOWNSHIP 40 SOUTH, RANGE 42 EAST, TOWN OF JUPITER, PALM BEACH COUNTY, FLORIDA  
APRIL 2021



**ABBREVIATIONS:**

- (C) = CALCULATED
- (P) = AS SHOWN ON PLAT
- D = CURVE'S DELTA ANGLE
- R = CURVE'S RADIUS
- L = CURVE'S CHORD BEARING
- CB = CURVE'S ARC LENGTH
- CHD = CURVE'S CHORD DISTANCE
- MON. = MONUMENT
- NAD83/90 = NORTH AMERICAN DATUM OF 1983 (1990 ADJUSTMENT)
- O.R.B. = OFFICIAL RECORD BOOK
- P.B. = PLAT BOOK
- P.B.C. = PALM BEACH COUNTY
- P.C.P. = PERMANENT CONTROL POINT
- PG. = PAGE
- PGS. = PAGES
- PRM = PERMANENT REFERENCE MONUMENT
- W/ = WITH
- NR = NON-RADIAL
- RAD = RADIAL

**LEGEND:**

- = SET 4"x4" CONCRETE MONUMENT WITH DISK STAMPED "PRM LB 4431" PERMANENT REFERENCE MONUMENT (P.R.M.), UNLESS OTHERWISE NOTED
- ⊙ = SET MAG NAIL WITH DISK STAMPED "PCP LB 4431" PERMANENT CONTROL POINT (P.C.P.)
- ⊕ = DENOTES CHANGE IN DIRECTION

**LIDBERG LAND SURVEYING, INC.**  
 675 West Indiantown Road, Suite 200, Jupiter, Florida 33458 TEL. 561-746-8454  
 LB4431

CAD:	K:\UST \ 344042 \ 20-071 \ 20-071-306 \ 20-071-306.DGN		
REF:			
FLD:	FB:	PG:	JOB: 20-071-306
OFF:	CASASUS		DATE: JANUARY 2021
CKD:	D.C.L.	SHEET 2 OF 2	DWG: D20-071P